

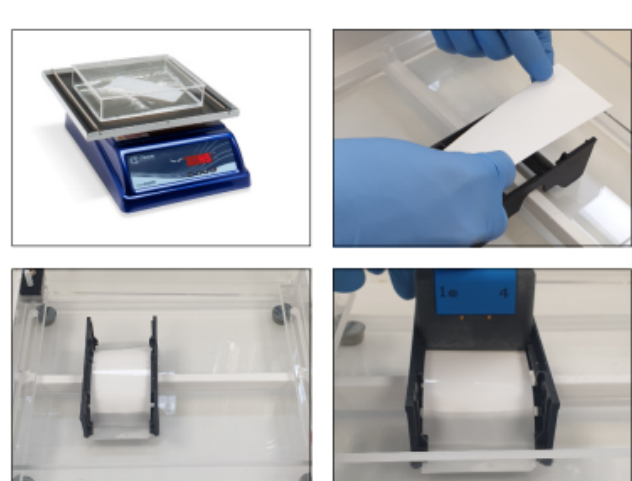
## Cellulose Acetate Clinical Electrophoresis



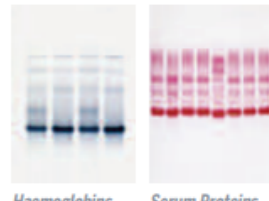
- For qualitative identification and quantification of haemoglobin, lipoprotein and serum proteins
- Compact high-resolution system for clinical electrophoresis
- Accommodates strips and gels up to 24 x 20 cm
- Complete range of cellulose acetate equipment
- Densitometer software and scanner available
- Ready kits available that include reagents and accessories required to perform complete tests



### CELLAS



The Cellas electrophoresis unit is the ideal system for dry cellulose acetate membranes



Haemoglobins Serum Proteins

Cellulose acetate electrophoresis is an important technique in clinical diagnostics. The Cleaver Scientific range of cellulose acetate products offers a complete system solution for research and clinical cellulose acetate electrophoresis applications.

Designed by life scientists to enhance clinical testing of biological protein samples. These applications include Detection of haemoglobinopathies such as Sickle cell, Thalassaemia; Dysproteinaemia; Hyperlipidaemias, High-density (HDL), Low-density (LDL) and Very-low-density (VLDL) lipoprotein evaluation; Monoclonal Gammopathies etc

Cleaver Scientific offers the complete system solution for research and Clinical Electrophoretic Cellulose Acetate Analysis with their Compact and High-Resolution systems.

All the range has been carefully manufactured and designed to high quality standards to address both research and clinical routine diagnostic testing.

## CSLMINISCAN

Automated densitometer for electrophoresis

The CSLMINISCAN Performs, fast, reliable and high quality densitometric scanning of electrophoresis strips and allows densitometry of the electrophoretic patterns of the most widely used methods: Serum proteins, hemoglobins, lipoproteins and immunofixation.



### Technical Features

- LED light source and high gain phototransistor.
- Reading system in absorbance with self-regulation of the source brightness.
- Densitometry of cellulose acetate and agarose gel membranes
- Reading of single lanes on the strip up to the maximum of 8 samples.
- External power supply 24V.
- Dimensions 116x156x63 mm (LPH)



### Software Features

- Pre-programmed analysis: Serum proteins, Hemoglobins, Lipoproteins.
- possibility to define additional exams.
- Automatic processing graphs electrophoretic pattern.
- Possibility of correction of graphs.
- Personal management and printing reports.
- Report header customization
- Compatible with Microsoft Windows XP, Vista and 7.

## Ordering Information

### Equipment

- CSL-CELLAS Horizontal Unit for Cellulose Acetate Electrophoresis
- CSL-CELLASMINI Mini Horizontal Unit for Cellulose Acetate Electrophoresis
- NANOPAC-300P Power supply
- CSLDENS TurboScan Software Densitometer (computer and scanner not included)
- CSLMINISCAN Automated Densitometer With 8 Reading Channels And Software
- CSLSCAN Flatbed Scanner for TurboScan software.

### Unsupported Dry Membranes (and accessories)

- CADRY-U2.513HBSP 2.5x13cm, hemoglobin & serum Protein (unsupported) pk100
- CADRY-U5.714HBSP 5.7x14cm, hemoglobin & serum Protein (unsupported) pk50
- CADRY-U5.7LP 5.7x13cm, lipoprotein (unsupported) pk50
- CSL-APPS-U4 Applicator Semi Micro (4 Samples) For Unsupported Membrane
- CSL-APPS-U8 Applicator Micro (8 Samples) For Unsupported Membrane
- CSL-BDG-U1 Bridge 1 Station For Unsupported Membrane 1 Unit
- CSL-MYLAR Mylar 5.7 x 10cm pk50
- CSL-WICKS Paper wicks 7.5x7cm, pk50 - Required if not using CSL-BRD-S1

### Supported Dry Membranes (and accessories)

- CADRY-S7.66HB For Hemoglobins 7.6 x 6 cm (8 samples/membrane) pk25
- CADRY-S7.63.6HB For Hemoglobin 7.6 x 3.6 cm (4 samples/membrane) pk25
- CADRY-S7.66SP For Serum Protein 7.6 x 6 cm (8 samples/membrane) pk25
- CADRY-S7.63.6SP For Serum Protein 7.6 x 3.6 cm (4 samples/membrane) pk25
- CSL-DROPS-S1 Applicator Micro Plus And Holder For Supported Membrane
- CSL-BRD-S1 Bridge 2 Stations For Supported Membrane
- CSL-VR-S1 Reagent Soaking Chamber For Supported Membrane
- CSL-M103 5.7 x 6 cm - For Hemoglobins/serum proteinspk25

### Customised Unsupported/supported Dry membranes

- CADRY-U7.515HBSP Dry cellulose acetate membrane 7.5 X 15 cm, hemoglobin & serum Protein (unsupported) pk50
- CADRY-S7.618HB Cellulose Acetate Supported Membranes For Hemoglobin 7.6 x 18 cm pk25
- CADRY-S7.515HB Cellulose Acetate Supported Membranes For Hemoglobin 7.5 x 15 cm pk25
- CADRY-S7.618SP Cellulose Acetate Supported Membranes For Serum Protein 7.6 x 18 cm pk25
- CADRY-S7.515SP Cellulose Acetate Supported Membranes For Serum Protein 7.5 x 15 cm pk25

### Hemoglobin Kits For Manual Techniques - Supported Membranes

- CSL-CAHB-M Kit: Hemoglobin. Kit content sufficient for 200 tests: 25 Cellulose Acetate Supported Membranes 7.6 x 6.2 cm (8 samples/membrane) - Hb Buffer 10X50mL - Ponceau S 100mL - Destain Solution 20X 250mL - 25 BLOTTING PAPER- 4 felted WICKS for CSL-BRD-S1 Bridge- 8 PADS (to dry the teeth of the sample applicator CSL-DROPS-S1), 1 x LYSING SOLUTION READY TO USE - 25 ML
- CSL-CAHB-M-KIT Kit content sufficient for 200 tests: 1x CSL-CAHB-M; 1x CSL-DROPS-S1; 3x CSL-BRD-S1; 1x CSL-VR-S1
- CSL-CAHB-M-CS Kit: Hemoglobin. Kit content sufficient for 200 tests: 25 Cellulose Acetate Supported Membranes 7.6 x 6.2 cm (8 samples/membrane) - Hb Buffer 10X50mL - Ponceau S 100mL - Destain Solution 20X 250mL - 25 BLOTTING PAPER- 50 Paper WICKS (7.5 x 7cm) for CSL-CELLAS Bridge- 8 PADS (to dry the teeth of the sample applicator CSL-DROPS-S1)
- CSL-CAHB-M-CS-KIT Kit content sufficient for 200 tests: 1x CSL-CAHB-M; 1x CSL-DROPS-S1; 1x CSL-VR-S1
- CSL-CAHB/4-M Kit: Hemoglobin. Kit content sufficient for 100 tests: 25 Cellulose Acetate Supported Membranes 7.6 x 3.5 cm (4 samples/membrane) - Hb Buffer 10X50mL - Ponceau S 100mL - Destain Solution 20X 250mL - 25 BLOTTING PAPER- 4 felted WICKS for CSL-BRD-S1 Bridge- 8 PADS (to dry the teeth of the sample applicator CSL-DROPS-S1), 1 x LYSING SOLUTION READY TO USE - 25 ML
- CSL-CAHB/4-M-KIT Kit content sufficient for 200 tests: 1x CSL-CAHB/4-M-CS; 1x CSL-DROPS-S1; 3x CSL-BRD-S1; 1x CSL-VR-S1
- CSL-CAHB/4-M-CS CellasKit: Hemoglobin. Kit content sufficient for 100 tests: 25 Cellulose Acetate Supported Membranes 7.6 x 3.5 cm (4 samples/membrane) - Hb Buffer 10X 50mL - Ponceau S 100mL - Destain Solution 20X 250mL - 25 BLOTTING PAPER- 50 Paper WICKS (7.5 x 7cm) for CSL-CELLAS Bridge- 8 PADS (to dry the teeth of the sample applicator CSL-DROPS-S1)
- CSL-CAHB/4-M-CS CellasKit: Hemoglobin. Kit content sufficient for 100 tests: 25 Cellulose Acetate Supported Membranes 7.6 x 3.5 cm (4 samples/membrane) - Hb Buffer 10X 50mL - Ponceau S 100mL - Destain Solution 20X 250mL - 25 BLOTTING PAPER- 50 Paper WICKS (7.5 x 7cm) for CSL-CELLAS Bridge- 8 PADS (to dry the teeth of the sample applicator CSL-DROPS-S1)
- CSL-CAHB/4-M-CS-KIT Kit content sufficient for 200 tests: 1x CSL-CAHB/4-M-CS; 1x CSL-DROPS-S1; 1x CSL-VR-S1

### Serum Protein Kit For Manual Techniques - Supported Membranes

- CSL-CASP-M Kit: Serum Proteins. Kit content sufficient for 200 tests: 25 Cellulose Acetate Supported Membranes 7.6 x 6.2 cm (8 samples/membrane) - SP Buffer 10X100mL - Ponceau S 100mL - Destain Solution 20X 250mL - 25 BLOTTING PAPER- 4 felted WICKS for CSL-BRD-S1 Bridge- 8 PADS (to dry the teeth of the sample applicator CSL-DROPS-S1)
- CSL-CASP-M-KIT Kit content sufficient for 200 tests: 1x CSL-CASP-M; 1x CSL-DROPS-S1; 3x CSL-BRD-S1; 1x CSL-VR-S1
- CSL-CASP-M-CS Kit: Serum Proteins. Kit content sufficient for 200 tests: 25 Cellulose Acetate Supported Membranes 7.6 x 6.2 cm (8 samples/membrane) - SP Buffer 10X100mL - Ponceau S 100mL - Destain Solution 20X 250mL - 25 BLOTTING PAPER- 50 Paper WICKS (7.5 x 7cm) for CSL-CELLAS Bridge- 8 PADS (to dry the teeth of the sample applicator CSL-DROPS-S1)
- CSL-CASP-M-CS Kit: Serum Proteins. Kit content sufficient for 200 tests: 25 Cellulose Acetate Supported Membranes 7.6 x 6.2 cm (8 samples/membrane) - SP Buffer 10X100mL - Ponceau S 100mL - Destain Solution 20X 250mL - 25 BLOTTING PAPER- 50 Paper WICKS (7.5 x 7cm) for CSL-CELLAS Bridge- 8 PADS (to dry the teeth of the sample applicator CSL-DROPS-S1)
- CSL-CASP-M-CS-KIT Kit content sufficient for 200 tests: 1x CSL-CASP-M; 1x CSL-DROPS-S1; 1x CSL-VR-S1
- CSL-CASP/4-M Kit: Serum Proteins. Kit content sufficient for 100 tests: 25 Cellulose Acetate Supported Membranes 7.6 x 3.5 cm (4 samples/membrane) - SP Buffer 10X100mL - Ponceau S 100mL - Destain Solution 20X 250mL - 25 BLOTTING PAPER- 4 felted WICKS for CSL-BRD-S1 Bridge- 8 PADS (to dry the teeth of the sample applicator CSL-DROPS-S1)
- CSL-CASP/4-M-KIT Kit content sufficient for 100 tests: 1x CSL-CASP/4-M-CS; 1x CSL-DROPS-S1; 3x CSL-BRD-S1; 1x CSL-VR-S1
- CSL-CASP/4-M-CS Kit: Serum Proteins. Kit content sufficient for 100 tests: 25 Cellulose Acetate Supported Membranes 7.6 x 3.5 cm (4 samples/membrane) - SP Buffer 10X100mL - Ponceau S 100mL - Destain Solution 20X 250mL - 25 BLOTTING PAPER- 50 Paper WICKS (7.5 x 7cm) for CSL-CELLAS Bridge- 8 PADS (to dry the teeth of the sample applicator CSL-DROPS-S1)
- CSL-CASP/4-M-CS-KIT Kit content sufficient for 100 tests: 1x CSL-CAHB/4-M-CS; 1x CSL-DROPS-S1; 1x CSL-VR-S1

### Reagents

- CSL-SPB10X100 Serum Protein Buffer Solution Conc. 10X - 100 MI
- CSL-HBB10X50 Hemoglobin Buffersolution Conc. 10X - 50 MI
- CSL-B6F4X250 Buffer Solution 6 Fractions Conc. 4X - 250 MI
- CSL-SS100 Stain Solution Ponceau S Ready To Use - 100 MI
- CSL-SS1000 Stain Solution Ponceau S Ready To Use - 1000 MI
- CSL-DS20X1000 Destain Solution Conc. 20X - 1000 MI
- CSL-DS20X250 Destain Solution Conc. 20X - 250 MI
- CSL-CS250 Clearing Solution Ready To Use - 250 MI
- CSL-CS1000 Clearing Solution Ready To Use - 1000 MI
- CSL-LS25 Lysing Solution Ready To Use - 25 MI

### Controls

- CSL-SPC-N Serum Protein Control Solution Normal Vial (2MI)
- CSL-SPC-A Serum Protein Control Solution Abnormal Vial (2MI)
- CSL-SPC-N10X Serum Protein Control Solution Normal Box (10 X 2 MI)
- CSL-HBC-A Hemoglobin Control Solution Abnormal (1MI)
- CSL-LPC Lipoprotein Control Solution (1MI)